

Refilling Epson Newer Cartridges

Before starting, it is recommended that you have a 1/16" drill bit, electric drill, some masking tape, a hot melt glue gun and a hobby blade. Work on a surface that can absorb spilled ink, like an old tablecloth or paper towels. In practice it does not have to be messy but neatness helps. Preheat the glue gun so that it is ready to be used.

Step 1. Use an Epson resetter of your choice and reset the chip first. Make sure chip can be reset before proceeding.

Step 3. Prepare the area to be removed by carefully marking a rectangular spot on the top right corner of the cartridge. The spot is ONLY to be on the unattached area of the label. The boundary of the label area will be glued to the cartridge.

Step 4. Mark a hole in-line with the key about 1/8" beyond where the key stops. Make a starter hole with a push pin or something sharp so that the drill hole position is precise.

After this you will have a hole on the side as well as on top. You may want to keep the cartridge upright using a clamp or other means.

Step 7. Very slowly inject ink through the top hole. Keep the needle to the side of the hole to allow air to exhaust(exit) while ink is entering. But keep it vertical and away from the side of the cartridge wall

Step 9. Seal the side hole after wiping the excess ink dry. Use as little hot melt glue as possible and you want to stretch a skin over the hole to seal it AIR-TIGHT.

TEST for AIR TIGHTNESS: Stand the cartridge up in the normal position and very gently squeeze the cartridge to see if any ink leaks out the sealed holes. The sealed holes MUST be airtight.

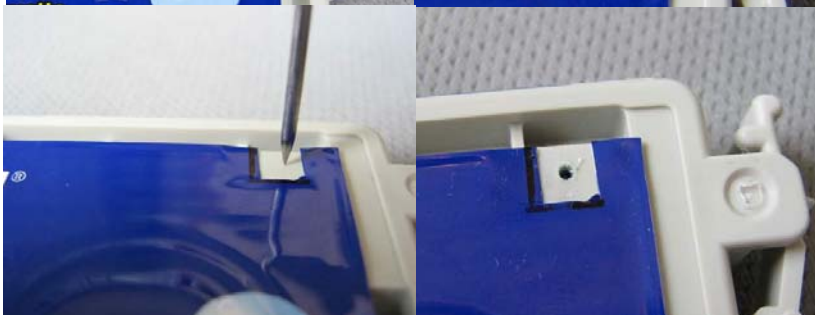
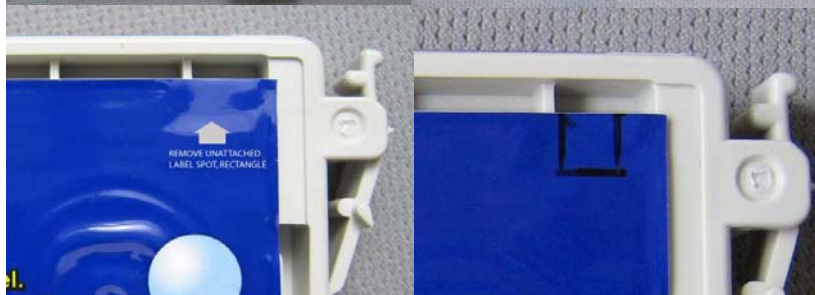
If you have a kitchen scale, the finished weight is 41 to 42 grams. Empty, it will be around 28 grams. Depending on how empty your cartridge is, you may have to add more than 12 ml to fill it completely. The MOST IMPORTANT POINT is to seal the holes back airtight.



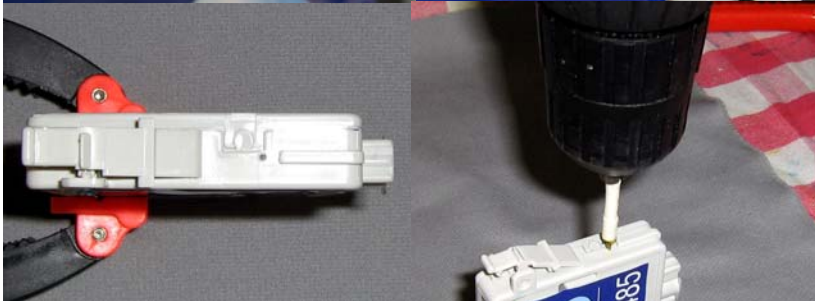
Step 2. Attach dispensing needle to syringe and fill with correct colour of ink approx 12ml/cc. The whole syringe.



NOTE: When making the hole do not go deeper than 1/8". Use tape wrapped around the bit to limit depth. Hole size is 1/16" diameter.



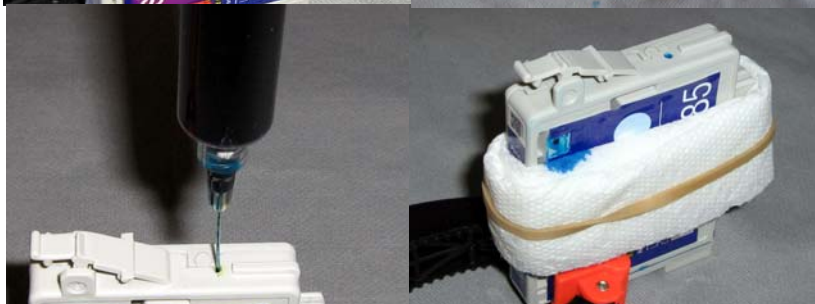
The hole is shown centered but putting it more to the right side will allow more ink to be refilled before it leaks out.



Step 5. Drill a hole where you marked off.



Step 6. Take a paper towel and fold it a few times and using an elastic, place it around the cartridge just below the side hole like a lifesaver ring. This is to catch ink which will leak out through the side hole.



Step 8. As you approach the end slow down. Ink will flow out of the side hole when it is full. If you injected too quickly more ink will come out even after you stopped injecting.



Step 10. Seal the hole as flat as possible. You don't want a blob into the hole. Form a skin in line with the key.